

ACCOMMODATION CENTER



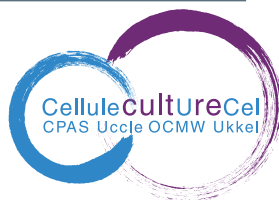
Do you need help for your housing search?

Accommodation Center can help you.

cellule.logement@cpasucclle.be | 02 370 75 11

expulsions@cpasucclle.be

CULTURE CENTER



Would you like to participate in cultural and sports activities? Do you need help for your children's school bills?

Culture Center can help you*.

Groupe.culture@cpasucclle.be

02 370 76 79 – 02 370 76 25 – 02/370 76 33

** if you are already benefiting from financial aid of CPAS Uccle*

BOUTIQUE DES 4 SAISONS

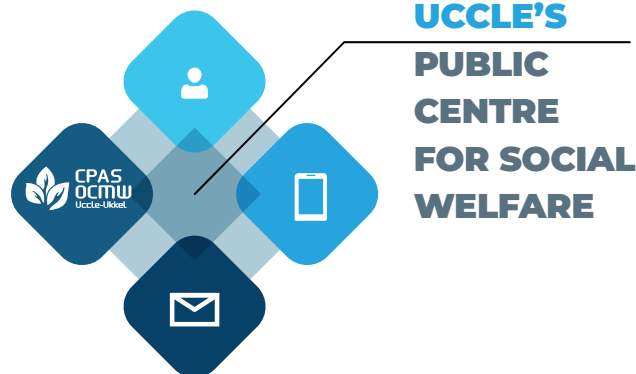


Do you need clothes, household linens, and kitchenware?

Boutique des 4 saisons can help you*.

boutique.4saisons@cpasucclle.be | 0496 26 97 70

** if you are already benefiting from financial aid of CPAS Uccle*



**UCCLE'S
PUBLIC
CENTRE
FOR SOCIAL
WELFARE**

- CPAS d'UCCLE
860 CHAUSSÉE D'ALSEMBERG
1180 BRUSSELS
- 02 370 75 11
- info@cpasucclle.be
- www.cpasucclle.brussels

EN 03.2025

CPAS OCMW UCCLE



**UCCLE'S PUBLIC
CENTRE FOR
SOCIAL WELFARE**

RECEPTION CENTER



Is this your first aid application to CPAS?
Is your social assistant absent?
Reception Center can help you.
as.accueil1@cpasuccl.be | 02 370 75 11



NEIGHBORHOOD SOCIAL SERVICE

Do you need help for handling your expenses?
Neighborhood Social Service can help you. You will meet your referent social assistant at CPAS.
info@cpasuccl.be | 02 370 75 11

SOCIAL BRANCH



Would you like to learn French,
to (re)gain a pace and (re)create social links?
Social Branch can help you.
antenne.sociale@cpasuccl.be | 02 370 76 58



MEDICAL CENTER

Do you need to consult a general practitioner?
Medical Center can help you.
cabinet.medical@cpasuccl.be | 02 370 76 85

PROMOJOB



Do you need help for finding a job or training?
Promojob can help you*.
Contact to your referent social assistant.
** if you are already benefiting from financial aid of CPAS Uccle*

CDAG

Do you need a food aid?
CDAG can help you.
cdag@cpasuccl.be | 02 370 76 65



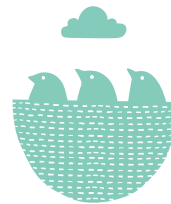
DEBT MEDIATION

Are you in debt?
Debt mediation service can help you.
mediation.dettes@cpasuccl.be | 0496-26 0457



ENERGY CENTER

Do you need help for paying your water, gas, and electricity bills?
Energy Center can help you.
cellule.energie@cpasuccl.be | 02 370 76 84



Crèche Asselbergs

CRÈCHE ASSELBERG

Are you looking for a Dutch-speaking kindergarten?
Crèche Asselbergs can help you.
creass@ocmwukkel.be | 02 340 37 87

BABYHALTE

Are you looking for a Dutch-speaking kindergarten?
Crèche Asselbergs can help you.
baby.halte@cpasuccl.be
0496 26 47 31 | 02 370 76 58
** if you are already benefiting from financial aid of CPAS Uccle*



RECEPTION AND ACCOMMODATION OF ELDERLY PEOPLE



Do you need companion while looking for a nursing (or care) home?
Reception and accommodation of elderly people service can help you.
service.placement@cpasuccl.be
02 370 75 15 | 02 370 76 93



SUD

Do you need help for carrying out your day-to-day tasks?
Uccle Services at Home (SUD) can help you.
sud@cpasuccl.be | 02 370 75 71

HOME BRUGMANN DOMAINE DU NECKERSGAT



Are you looking for a nursing home in Uccle?
Home Brugmann and Domaine du Neckersgat nursing homes can help you.
accueil.hb@cpasuccl.be | 02 370 80 11
info.neckersgat@cpasuccl.be | 02 370 62 00



PERMANENT LEGAL HELP

Do you need a legal advice?
Permanent legal help can help you.
Every Wednesday from 17:00 to 20:00 at CPAS.