

ACCOMMODATION CENTER



Do you need help for your housing search?

Accommodation Center can help you.
cellule.logement@cpasuccl.be | 02 333 89 62
expulsions@cpasuccl.be

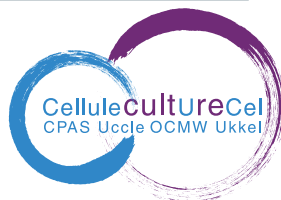


ENERGY CENTER

Do you need help for paying your water, gas, and electricity bills?

Energy Center can help you.
cellule.energie@cpasuccl.be | 02 370 776 84

CULTURE CENTER



Would you like to participate in cultural and sports activities? Do you need help for your children's school bills?

Culture Center can help you*.
Groupe.culture@cpasuccl.be
02 370 76 79 – 02 370 76 25 – 02/370 76 33

** if you are already benefiting from financial aid of CPAS Uccle*

BOUTIQUE DES 4 SAISONS



Do you need clothes, household linens, and kitchenware?

Boutique des 4 saisons can help you*.
boutique.4saisons@cpasuccl.be | 0496 26 97 70

** if you are already benefiting from financial aid of CPAS Uccle*



UCCLE'S PUBLIC CENTRE FOR SOCIAL WELFARE

CPAS d'UCCLE
860 CHAUSSÉE D'ALSEMBERG
1180 BRUSSELS
 02 370 75 11
 info@cpasuccl.be
 www.cpasuccl.brussels

EN 2024

CPAS OCMW UCCLE



UCCLE'S PUBLIC CENTRE FOR SOCIAL WELFARE

RECEPTION CENTER



Is this your first aid application to CPAS?
Is your social assistant absent?
Reception Center can help you.
as.accueil1@cpasuccl.be | 02 370 75 11



NEIGHBORHOOD SOCIAL SERVICE

Do you need help for handling your expenses?
Neighborhood Social Service can help you. You will meet your referent social assistant at CPAS.
info@cpasuccl.be | 02 370 75 11

SOCIAL BRANCH



Would you like to learn French,
to (re)gain a pace and (re)create social links?
Social Branch can help you.
antenne.sociale@cpasuccl.be | 02 370 76 58



MEDICAL CENTER

Do you need to consult a general practitioner?
Medical Center can help you.
cabinet.medical@cpasuccl.be | 02 370 76 85

PROMOJOB



Do you need help for finding a job or training?
Promojob can help you*.
Contact to your referent social assistant.
** if you are already benefiting from financial aid of CPAS Uccle*

CDAG

Do you need a food aid?
CDAG can help you.
cdag@cpasuccl.be | 02 370 76 65



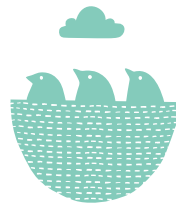
DEBT MEDIATION

Are you in debt?
Debt mediation service can help you.
mediation.dettes@cpasuccl.be | 0496-26 0457

CHILDREN FOSTERING



Are you looking for a regular day care for your child?
Children fostering service can help you.
accueil.enfants@cpasuccl.be
02 370 75 22 | 02 370 75 44



Crèche Asselbergs

CRÈCHE ASSELBERG

Are you looking for a Dutch-speaking kindergarten?
Crèche Asselbergs can help you.
creass@ocmwukkel.be | 02 340 37 87

BABYHALTE

Are you looking for a Dutch-speaking kindergarten? Crèche Asselbergs can help you.
baby.halte@cpasuccl.be
0496 26 47 31 | 02 370 76 58
** if you are already benefiting from financial aid of CPAS Uccle*



RECEPTION AND ACCOMMODATION OF ELDERLY PEOPLE



Do you need companion while looking for a nursing (or care) home?
Reception and accommodation of elderly people service can help you.
service.placement@cpasuccl.be
02 370 75 15 | 02 370 76 93



SUD

Do you need help for carrying out your day-to-day tasks?
Uccle Services at Home (SUD) can help you.
sud@cpasuccl.be | 02 370 75 71

HOME BRUGMANN DOMAINE DU NECKERSGAT



Are you looking for a nursing home in Uccle?
Home Brugmann and Domaine du Neckersgat nursing homes can help you.
accueil.hb@cpasuccl.be | 02 370 80 11
info.neckersgat@cpasuccl.be | 02 370 62 00



PERMANENT LEGAL HELP

Do you need a legal advice?
Permanent legal help can help you.
Every Wednesday from 17:00 to 20:00 at CPAS.